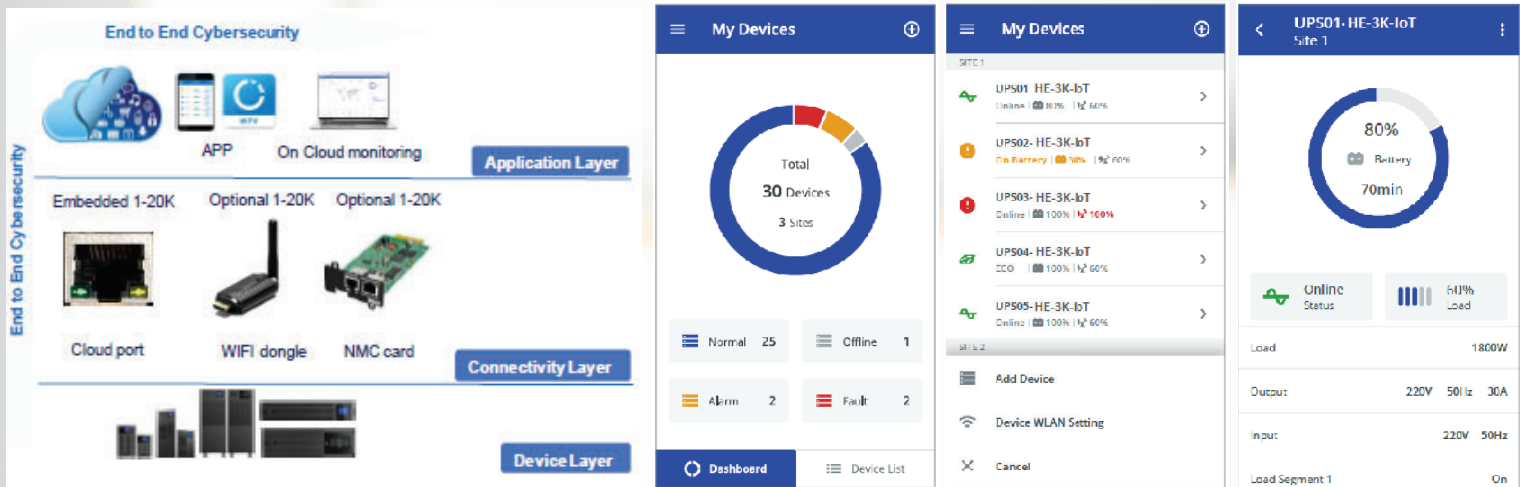


HE 10K-20K IoT-33 Series

Features



- DSP Control
- Parallel Redundancy up to 3 units
- Flexible 3:3,3:1,1:1 input and output wiring (Combo)
- Battery Q'ty adjustable +/- 8/9/10 for 10k, +/- 16/17/18/19/20 for 15k-20k
- Output PF 1.0 provide maximum power in compact size
- Wide Input Range 110-300VAC
- Online efficiency up to 95%, ECO up to 98%
- Frequency Converter Mode
- Input THDI < 5%
- Output THDv < 1% linear load
- Auto Self-Testing System
- Digital charger: 0-13A adjustable
- Automatic detect additional EBM quantity for simplify
- 125% overload for 10 minutes
- Multiple Communication Port
- Wide operating environment 0-50 celsius
- Color touchable LCD with gravity sensor support up to 8 languages
- Mobile APP for monitoring, configuration, Support Android/IOS
- USB HID enable monitoring on UPS without software installation
- Build-in Maintenance Bypass Switch and Cabinet Wheel
- Built-in Over Voltage Cut-Off device (OVCD) for Tough environment,
- IP protection level: IP20
- fan lock detection, overtemp, overload warning to enhance the product reliability
- WLAN module for IoT connection, wireless connection (WIFI dongle) as optional
- Embedded Ethernet port solution for safe network connection to Cloud with IoT features trend



The New full range HE IoT series, built for the most reliability, purity and power

HE IoT series UPS is the high density, true online double conversion on-line power protection for IT and OT application. Capable of supporting load from 1 to 20kVA in a compact tower and RT (rack-tower) form.

These latest range of UPS comes with future-proof connectivity design having the capability to connect to Cloud seamlessly to allow the monitoring of the UPS online through any internet connected device. To ensure users information is safe and protected, these connectivity is compliant with IEC standard cybersecurity.

- Easy to setup the Safe connection to Cloud
- E2E Cybersecurity and GDPR and IEC 62443 certificated device for IoT
- Connect to Cloud through MQTT protocol (the most widely used to IoT protocol)
- Real time health monitoring on the equipment to enable business continuity and failure prevention
- Remote monitoring, scheduled maintenance and UPS firmware upgrade *launched soon
- Reduce the responsive time on product failure as Cloud push the exact information to end user and service people at the same time.



MODEL		HE-Combo-10K-33-IoT	HE-Combo-15K-33-IoT	HE-Combo-20K-33-IoT	
CAPACITY	VA/WATT	10KVA/10KW (PF1.0)	15KVA/15KW (PF1.0)	20KVA/20KW (PF1.0)	
INPUT	Voltage Range	100-300VAC 1 Phase or 273 - 520VAC 3 Phase			
	Frequency Range	50 Hz ± 10% (Auto sensing)			
	Phase	Single or Three phase selectable			
	Current THDI	<3% @ 100% linear Load, <5% @ 100% non linear load			
	Power Factor	≥ 0.995			
	Generator Input	2 x UPS Rating Power			
OUTPUT	Voltage Range	220/230/240 VAC (± 1%) 1 Phase or 380/400/415 VAC (± 1%) 3 Phase			
	Phase	Single or Three phase with ground			
	Frequency (Synchronized Range)	50 Hz ± 10%			
	Frequency (Battery Mode)	50 Hz ± 0.1%			
	Current Crest Ratio	3:1			
	Harmonic (THDv)	< 1% THD (@ 100% Linear Load), < 5% THD (@ 100% Non-linear Load)			
	Protection	Short Circuit Protection			
	Output Waform	Pure Sinewave			
	Outlet	Terminal Type			
	Overload Capacity	Line Mode	Continuous @ 100%~105% ; 10 mins @ 105% ~ 125% ; 1 mins @ 125%~ 150% ; 500 ms @ > 150%		
		Battery Mode	Continuous @ 100%~105% ; 1 mins @ 105% ~ 125% ; 30 secs @ 125%~ 150% ; 500 ms @ > 150%		
EFFICIENCY	AC Mode / Battery Mode	> 95% / >92%	> 96% / >94%	> 96% / >94%	
	ECO mode	> 98%	> 98.8%	> 99%	
BATTERY	Number of Batteries Per String	16-20 adjustable	32-40 adjustable		
	Battery Capacity (Ahr)	Depending on the capacity of external batteries			
	Backup Time (depend on load)				
	Recharge Time (to 90%)				
	Charging Current (Max.)	13A adjustable			
Battery Type	Sealed Lead Acid Maintenance Free				
TRANSFER TIME	AC to DC	Zero			
INDICATOR	LCD	Input information: Voltage/Frequency/Ambient Temperature/Utility Present/Utility Lost, Output information: Voltage/Frequency/DC BUS/Utility Present/Utility Lost, Load Information: %Watt%/VA/Current(A)/Overload/Short Circuit/Load Level, Battery Information: Voltage/Battery Level/Low/Backup time/Remaining time/Charging status/EBM status/Over charging/Discharging, Mode information: UPS status/Event log/Measurements/Control/Settings/Identify/Mode icon			
AUDIBLE ALARM	Battery Mode	Sounding every 4 seconds			
	Low Battery	Sounding every second			
	Overload	Sounding twice every second			
	Fault	Continuously Sounding			
DIMENSION	W x H x D mm	350x890x650			
WEIGHT	kg	96 ex.bat	129.4 ex.bat	139 ex.bat	
ENVIRONMENT	Operating Environment	0-50° C			
	Relative Humidity	0-95% (NON-CONDENSING)			
	Noise Level	<55dB @ 1 Meter	<55dB @ 1 Meter		
INTERFACE *build-in	RJ45 (Ethernet),WLAN *	Free Mobile App support IoT, Android connect to GDPR IEC 62443 compliance Cloud service for IoT solution			
	USB & RS-232 *	Software supports Windows Family, Linux, Sun Solaris, IBM AIX, Compaq True64, SGI IRIX, FressBSD, HP-UX and MAC			
	Others interfaces *	RJ45 for EBM & Li-Ion battery type detection; EPO Dry In & Dry out contract for various external H/W control			
	Intelligent Slot (Option)	For an install an optional SNMP Adapter/ AS400 Relay Card / RS485 / USB			
INTERNATIONAL STANDARDS	CE	Low Voltage Directive (Safety): EN62040-1-1 EMC Directive: EN62040-2, EN61000-2-2, EN61000-4-2, EN61000-4-3, EN61000-4-4, EN61000-4-5, EN61000-4-6, EN61000-4-8			

Specification are subject to change without prior notice.



Syndome Electronics Industry Co.,Ltd.
66 ซอยประชาอุทิศ 59 แขวง 3 เขตคลองเตย กรุงเทพมหานคร รหัสไปรษณีย์ 10140

Tel: (662)8726900 (auto) Fax: (662)8726909
URL: <http://www.syndome.com> Email: public@syndome.com